

Washington Student Achievement Council

November 14, 2012

DRAFT - House Bill 1079

Student Enrollment Update for Academic Year 2011-12

Effective July 1, 2003, HB 1079¹ allows any student, including presumed undocumented students who meet specific criteria, to pay in-state tuition at Washington's public colleges and universities. To qualify for resident tuition, students must complete an affidavit that affirms they have met the following conditions:

- Resided in Washington State for three (3) years immediately prior to receiving a high school diploma, and completed the full senior year at a Washington high school;
or
- Completed the equivalent of a high school diploma and resided in Washington State for the three (3) years immediately before receiving the equivalent of the diploma;
and
- Continuously resided in Washington State since earning the high school diploma or its equivalent.

In addition to certifying that they have met the conditions above, the affidavit states that students promise to file for permanent residency at the earliest opportunity the student is eligible and must indicate a willingness to engage in other activities necessary to acquire citizenship.

HB 1079 Survey Results

The table and figures that follow show **new** enrollments under HB 1079 for each academic year since the bill was authorized in 2003 through 2011-12.

In order to apply state law in harmony with federal law, certain U.S. citizen students and non-immigrant visa holders who meet HB 1079 requirements for high school graduation and continuous presence in Washington may qualify for resident status for tuition purposes under the provisions of HB 1079. These categories are reflected in the information that follows.

¹ HB 1079 – 2003 codified as RCW 28B.15.012(2)(e)

A. Total New Annual 1079 Affidavit Enrollment Increase Slows

Total New 1079 Annual Enrollments – 2003 through 2012

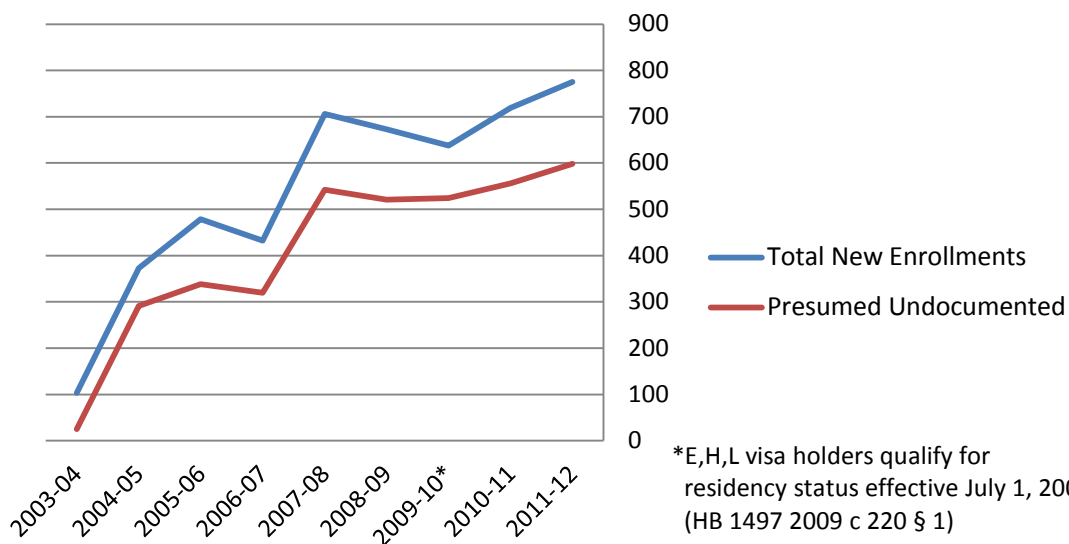
	Total Annual 2011-12	Total Annual 2010-11	Total Annual* 2009-10	Total Annual 2008-09	Total Annual 2007-08	Total Annual 2006-07	Total Annual 2005-06	Total Annual 2004-05	Total Annual 2003-04	Total
Total New Enrollments	775	719	638	673	706	432	479	373	103	4123
Presumed Undocumented	598	556	524	521	542	320	338	291	25	3117
Eligible US Citizens	37	52	26	28	20	6	16	2	0	150
Eligible Visa Holders	140	111	89	124	144	106	133	80	78	865

*E, H, and L visa holders qualify for resident status effective July 1 2009 (HB 1487 - 2009 codified as RCW 28B.15.012(2)(f))

- There was an 8 percent increase (n=56) in Total New Enrollments for 2011-12, down from a 13 percent increase (n=81) in 2010-11.
- ‘Presumed Undocumented’ students submitting affidavits increased 7.5% (n=42)
- ‘Eligible US Citizens’ decreased 40 percent after doubling last year.
- ‘Eligible Visa Holders’ increased 26 percent (111 to 140), about the same as last year. This includes a substantial increase in permanent resident visa holders – 39 to 96.

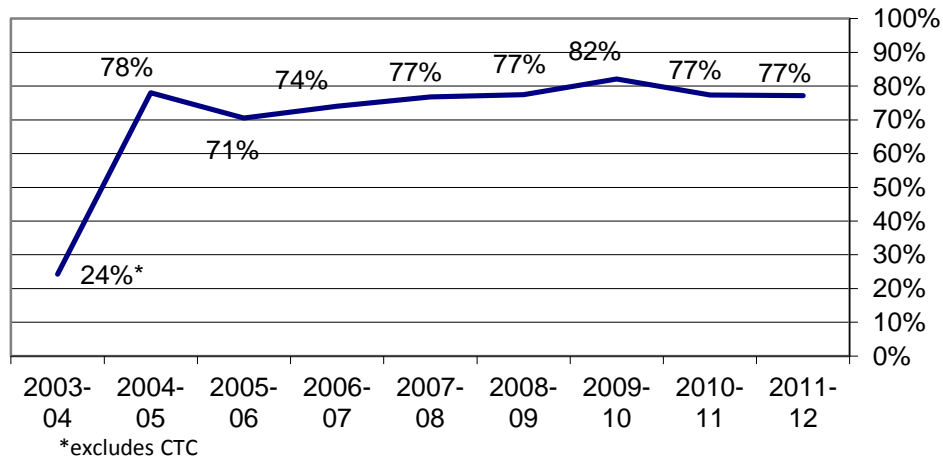
B. Presumed Undocumented students submitting affidavits increased 7.5 percent (n=42 to a total of 598)

Total New 1079 Enrollments and Presumed Undocumented, by Year



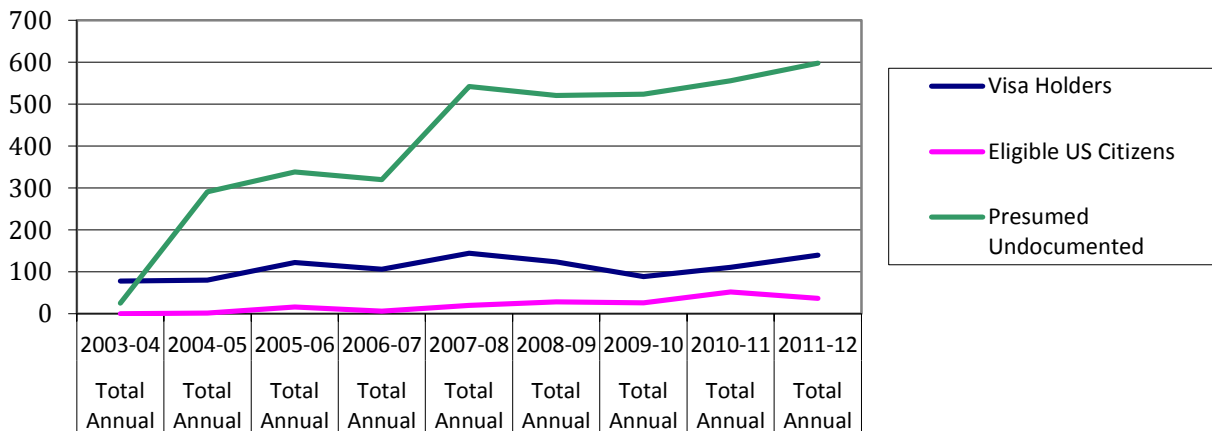
C. Although the number of Presumed Undocumented students submitting affidavits increased, the percentage compared to overall submissions remained the same

Percentage Undocumented



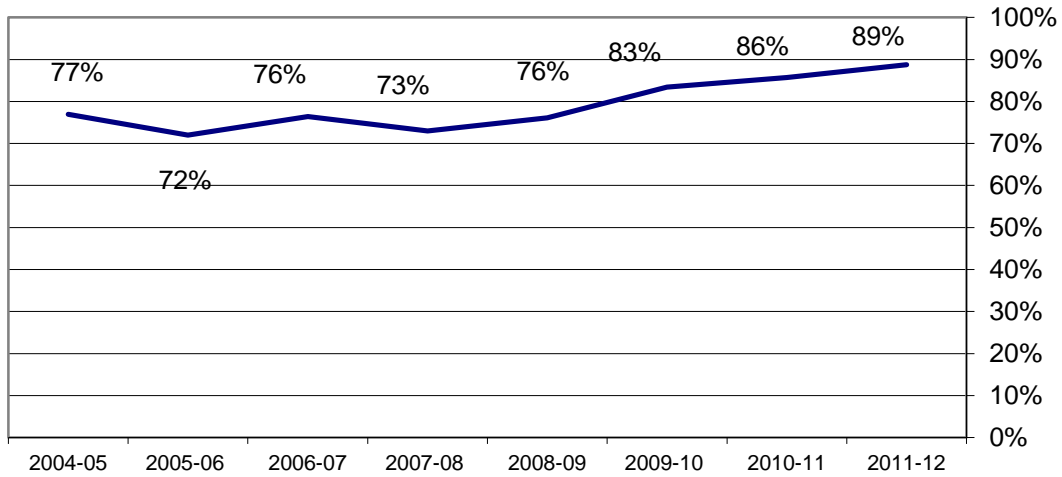
D. Eligible Visa holders increased 26 percent between 2010-11 and 2011-12 (an increase of 29 to a total of 140), primarily due to an increase in permanent resident affidavits (from 39 to 96). Eligible U.S. Citizens decreased after doubling in number last year (a decrease of 15 to a total of 37).

1079 Affidavits by Immigration Status



E. Community and Technical College students make up the largest percentage of total affidavits, increasing from 86 to 89 percent since last year.

Percentage of Total Affidavits Submitted - CTC



Percentage of Total Affidavits Submitted, by Sector and Category

